

Claude



```
(kali@kali) (~/.hexstrike-ai)
└─$ cd ~/.hexstrike-ai
└─$ source hexstrike-env/bin/activate
(hexstrike-env)(kali@kali) ~/.hexstrike-ai
└─$ python hexstrike_server.py
2026-06-03 08:51:12,967 - main - INFO - Process pool worker 0 started
2026-06-03 08:51:12,968 - main - INFO - Process pool worker 1 started
2026-06-03 08:51:12,968 - main - INFO - Process pool worker 2 started
2026-06-03 08:51:12,969 - main - INFO - Process pool worker 3 started

[INFO] Server starting on 127.0.0.1:8080
[INFO] Core integrated modules | Adaptive AI decision engine active
[INFO] Blood-Red team engaged - selected offensive operations on

2026-06-03 08:51:13,000 - main - INFO -
2026-06-03 08:51:13,000 - main - INFO -
2026-06-03 08:51:13,000 - main - INFO -
2026-06-03 08:51:13,000 - main - INFO -
2026-06-03 08:51:13,000 - main - INFO -
2026-06-03 08:51:13,000 - main - INFO -
2026-06-03 08:51:13,001 - main - INFO -
2026-06-03 08:51:13,001 - main - INFO -
2026-06-03 08:51:13,001 - main - INFO -
2026-06-03 08:51:13,002 - werkzeug - INFO - WARNING: This is a development server. Do not use it in a production deployment. Use a pro
```



How to setup HexStrike MCP Server (Practice Lab)

Networkwalks Academy

HOW TO SETUP HEXSTRIKE MCP SERVER

Kali Linux environment

Cyber Security & Ethical Hacking Labs • Networkwalks Academy

TASK

Setup Hexstrike MCP Server on Kali linux with Claude desktop

Related Info:

- Lab environment: Hexstrike-AI MCP server with Claude desktop on Kali Linux VM

SOLUTION

Download Claude desktop

Download Claude desktop on Kali Linux using Github:

Github repository & detailed instructions can be found here: <https://github.com/aaddrick/claude-desktop-debian>

Add the GPG key

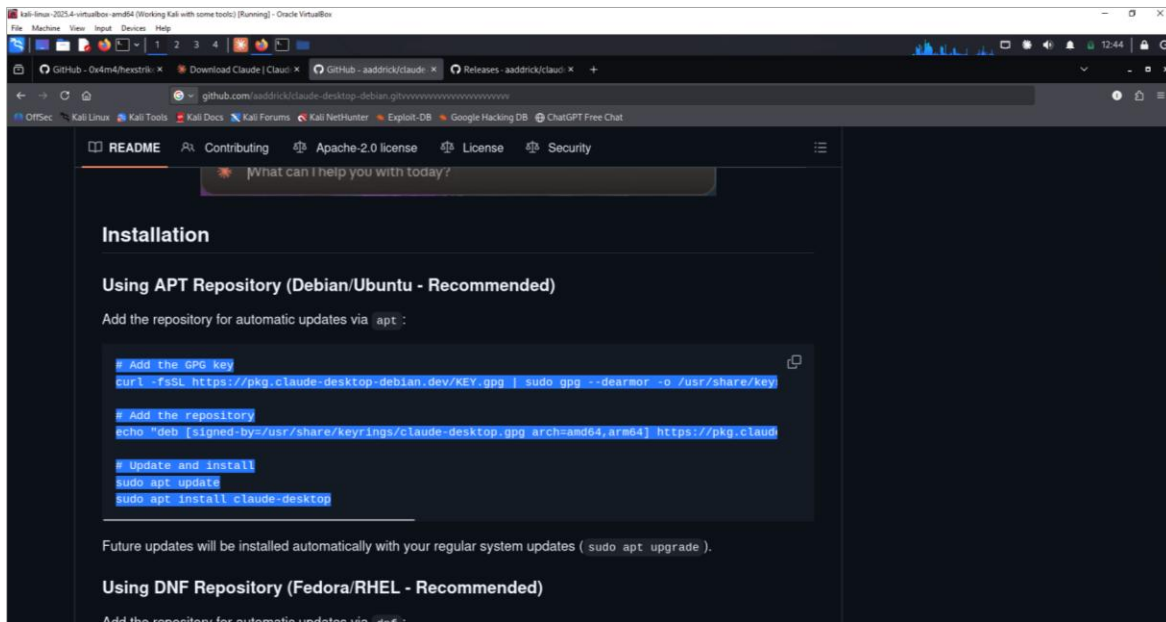
```
curl -fsSL https://pkg.claude-desktop-debian.dev/KEY.gpg | sudo gpg --dearmor -o /usr/share/keyrings/claude-desktop.gpg
```

Add the repository

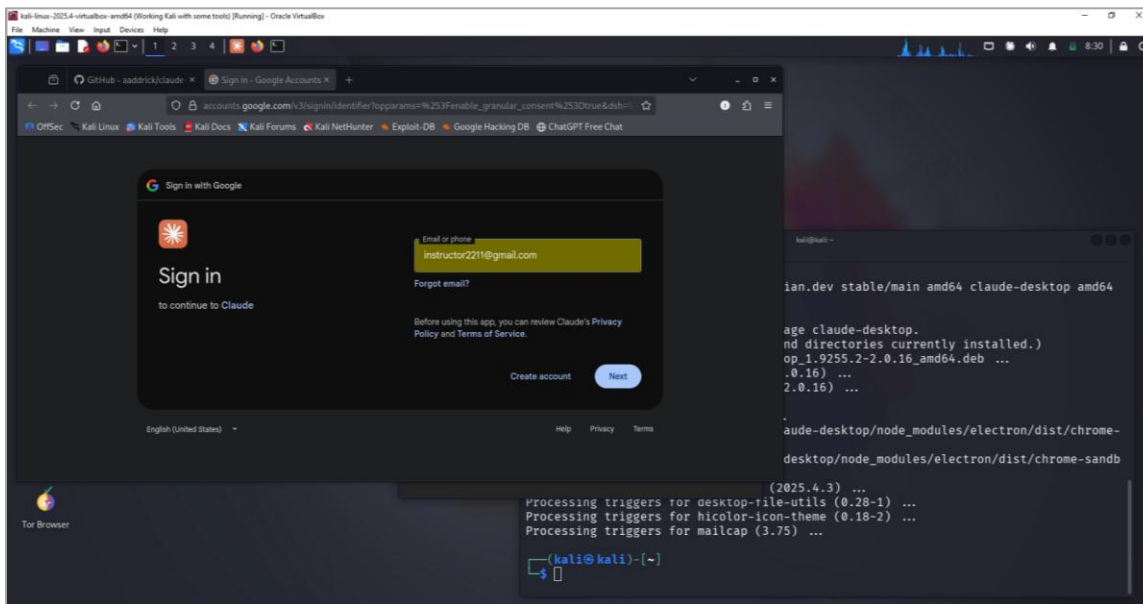
```
echo "deb [signed-by=/usr/share/keyrings/claude-desktop.gpg arch=amd64,arm64] https://pkg.claude-desktop-debian.dev stable main" | sudo tee /etc/apt/sources.list.d/claude-desktop.list
```

Update and install

```
sudo apt update  
sudo apt install claude-desktop
```



Open Claude desktop AI & complete the sign-in process:



Download Hexstrike MCP

Download Hexstrike MCP on Kali Linux using Github by running below commands.

Github repository & detailed instructions can be found here: <https://github.com/0x4m4/hexstrike-ai>

1. Clone the repository

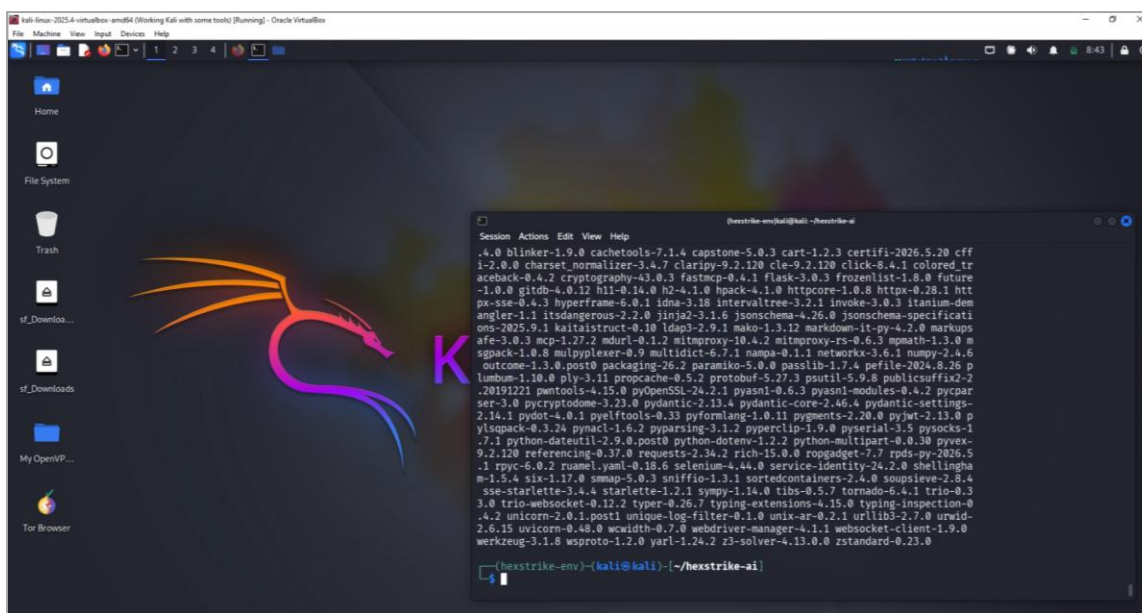
```
git clone https://github.com/0x4m4/hexstrike-ai.git
cd hexstrike-ai
```

2. Create virtual environment

```
python3 -m venv hexstrike-env
source hexstrike-env/bin/activate # Linux/Mac
```

3. Install Python dependencies

```
pip3 install -r requirements.txt
```

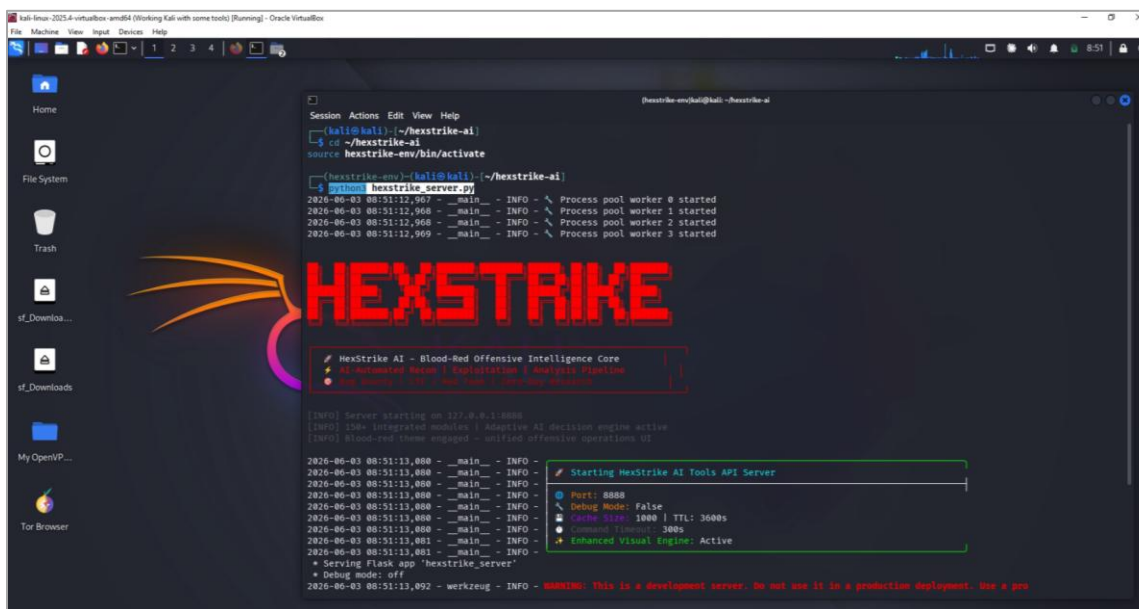


```
kali-linux-2024.4-virtualbox-amd64 (Working Kali with some tools) [Running]: Oracle VM VirtualBox
File Machine View Input Devices Help
Home
File System
Trash
st_Downloa...
st_Downloads
My OpenWP...
Tor Browser

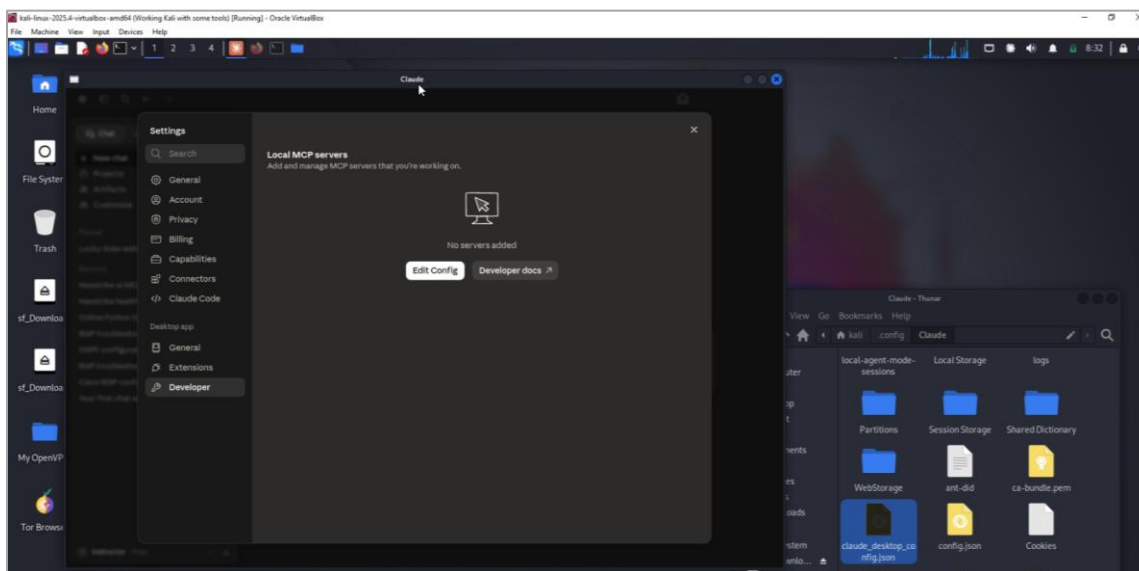
[hexstrike-env]kali@kali:~/hexstrike-ai
Session Actions Edit View Help
.4.0 blinker-1.9.0 cachetools-7.1.4 capstone-5.0.3 cart-1.2.3 certifi-2026.5.20 cff
i-2.0.0 charset_normalizer-3.4.7 claripy-9.2.120 cle-9.2.120 click-8.4.1 colored_tr
aceback-0.4.2 cryptography-43.0.3 fastmcp-0.4.1 flask-3.0.3 frozenlist-1.8.0 future
-1.0.0 gitdb-4.0.12 h11-0.14.0 h2-4.1.0 hpack-4.1.0 httplib2-1.0.8 httpx-0.28.1 htt
px-sse-0.4.3 hyperframe-6.0.1 idna-3.18 intervaltree-3.2.1 invoke-3.0.3 itanium-dem
angler-1.1 itsdangerous-2.2.0 Jinja2-3.1.6 jsonschema-4.26.0 jsonschema-specificati
ons-2025.9.1 kaitiistruct-0.10 ldap3-2.9.1 mako-1.3.12 markdown-it-py-4.4.2.0 markups
afe-3.0.3 mcp-1.27.2 mdurl-0.1.2 mitmproxy-10.4.2 mitmproxy-rs-0.6.3 mpmath-1.3.0 m
sgpack-1.0.8 multiplexer-0.9 multidict-6.7.1 nampa-0.1.1 networkx-3.6.1 numpy-2.4.6
outcome-1.3.0 post0 packaging-26.2 paramiko-5.0.0 passlib-1.7.4 pefile-2024.8.26 p
lumbum-1.10.0 ply-3.11 procpache-0.5.2 protobuf-5.27.3 postill-5.9.8 publicsuffix2-2
.20191221 pentools-4.15.0 pyOpenSSL-24.2.1 pyasn1-0.6.3 pyasn1-modules-0.4.2 pycpar
ser-3.0 pycryptodome-3.23.0 pydantic-2.13.4 pydantic-core-2.46.4 pydantic-settings-
2.14.1 pydot-4.0.1 pyelftools-0.33 pyformlang-1.0.11 pygments-2.20.0 pyjwt-2.13.0 p
ysocks-0.3.24 pynacl-1.6.2 pyparsing-3.1.2 pyperclip-1.9.0 pyserial-3.5 pysocks-1
.7.1 python-dateutil-2.9.0.post0 python-dotenv-1.2.2 python-multipart-0.0.30 pyvex-
9.2.120 referencing-0.37.0 requests-2.34.2 rich-15.0.0 roppadget-7.7 rpsd-py-2026.5
.1 rpyc-6.0.2 ruamel.yaml-0.18.6 selenium-4.44.0 service-identity-24.2.0 shellintha
m-1.5.4 six-1.17.0 smmap-5.0.3 sniffio-1.3.1 sortedcontainers-2.4.0 soupsieve-2.8.4
sse-starlette-3.4.4 starlette-1.2.1 sympy-1.14.0 tihs-0.5.7 tornado-6.4.1 trio-0.3
3.0 trio-websocket-0.12.2 typer-0.26.7 typing-extensions-4.15.0 typing-inspection-0
.4.2 unicorn-2.0.1.post1 unique-log-filter-0.1.0 unix-ar-0.2.1 urllib3-2.7.0 urwid-
2.6.15 uvicorn-0.48.0 wcmid-0.7.0 webdriver-manager-4.1.1 websocket-client-1.9.0
werkzeug-3.1.8 wsproto-1.2.0 yarl-1.24.2 z3-solver-4.13.0.0 zstandard-0.23.0

[hexstrike-env]kali@kali:~/hexstrike-ai
```

```
cd ~/hexstrike-ai
source hexstrike-env/bin/activate
python3 hexstrike_server.py
```

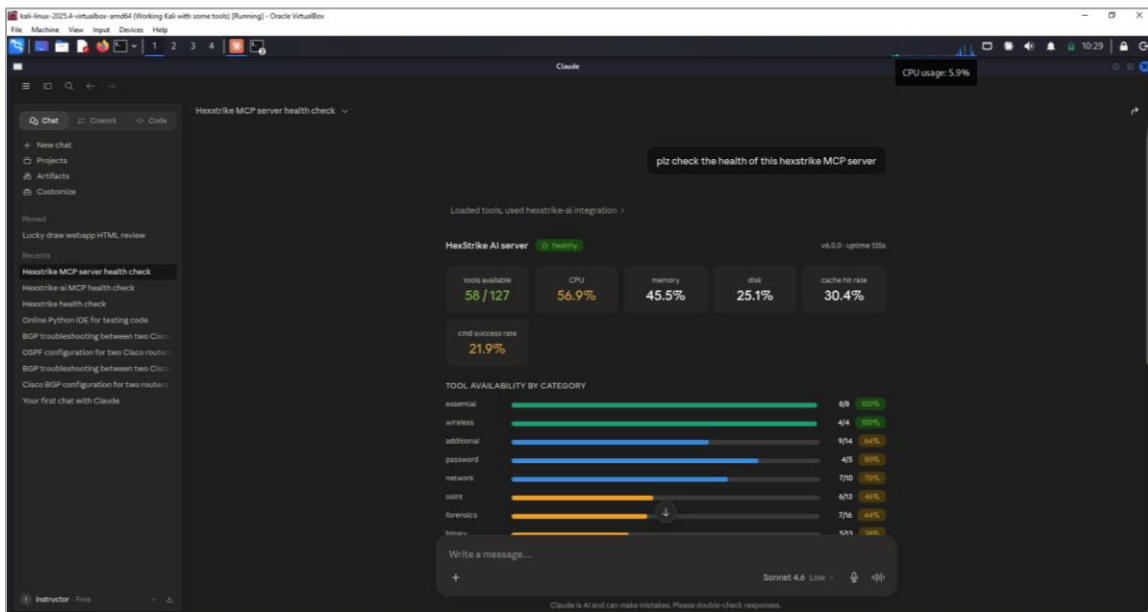
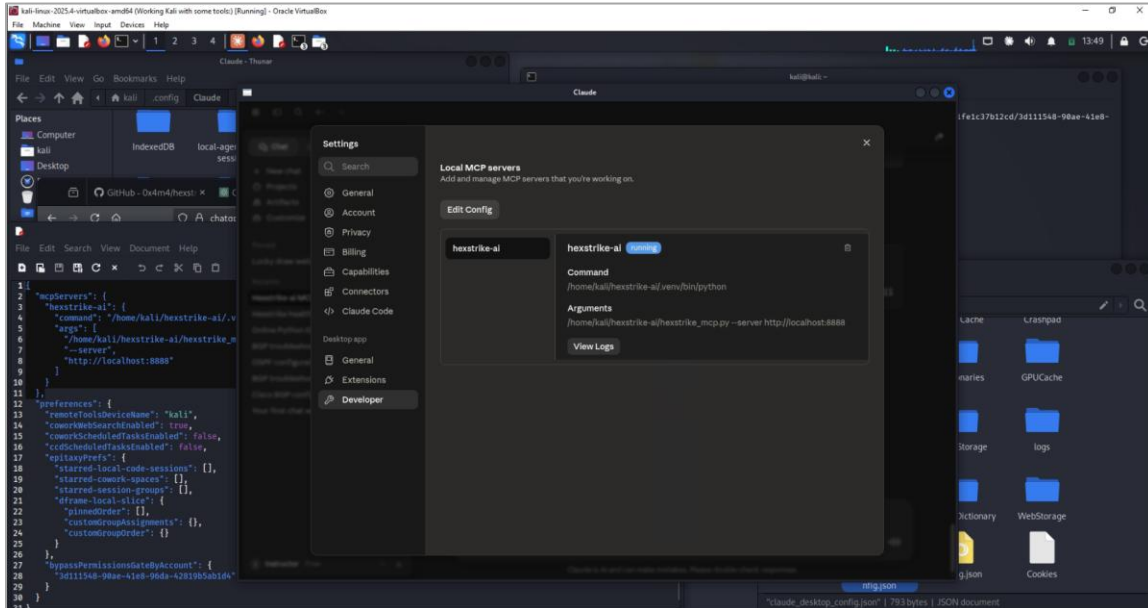


Edit MCP Server configuration on claudes desktop:



```
{
  "mcpServers": {
    "hexstrike-ai": {
      "command": "/home/kali/hexstrike-ai/hexstrike-env/bin/python",
      "args": [
        "/home/kali/hexstrike-ai/hexstrike_mcp.py",
        "--server",
        "http://localhost:8888"
      ]
    }
  }
}
```

Server is running now:





© All Rights are reserved, Networkwalks Academy

Contact us today for your next training course & certification on
Cisco CCNA, Cybersecurity, Ethical Hacking, Python programming, Linux & AI.

 **+27 766 222 218 | +27 788 220 600**

Leave your feedback at: info@networkwalks.com. Your technical questions, comments & suggestions are always Welcomed.
www.networkwalks.com